

FYAM Series Bottom Joint Type Air Valve

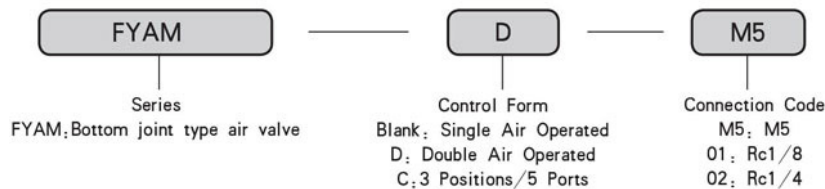


FYAM-01

● Character

Valve body is Bottom connected structure, air inlet and air outlet are on the same plane, you can connect directly without pipe joint and other accessories. Multi-valves in series are valve terminal. Valve body is fabricated by pressure casting; inner bore is adopting special processing technology, small frictional drag, and high flow capacity.

● Ordering Code

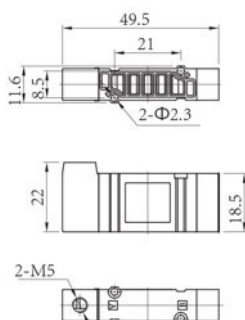


■ Technical Parameter

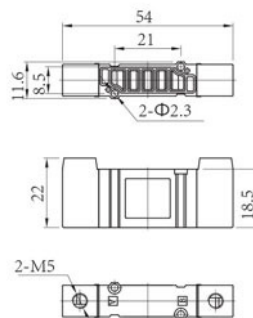
Specification	Item	Function	Pipe Size	Applicable Medium	Applicable Pressure Range	Lubrication	Medium Temperature
FYAM-M5	2 Positions/ 5Ports		M5	Air	0.15 ~ 0.7 MPa	Needless	-5 ~ 60°C
FYAM-D-M5			M5				
FYAM-01			Rc1/8				
FYAM-D-01			Rc1/8				
FYAM-02			Rc1/4				
FYAM-D-02			Rc1/4				
FYAMC-D-M5	3 Positions/ 5Ports		M5	Air	0.15 ~ 0.7 MPa	Needless	-5 ~ 60°C
FYAMC-D-01			Rc1/8				
FYAMC-D-02			Rc1/4				

■ Figure Dimension

● FYAM-M5



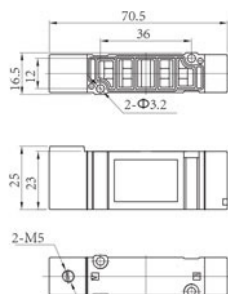
● FYAM-D-M5



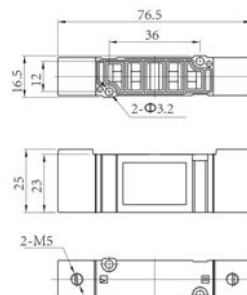
FYAM Series Bottom Joint Type Air Valve

Figure Dimension

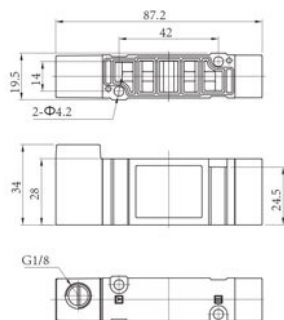
● FYAM-01



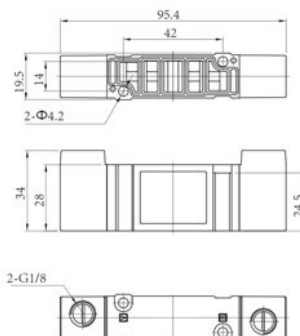
● FYAM-D-01



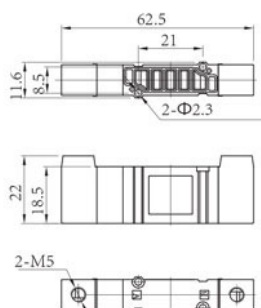
● FYAM-01



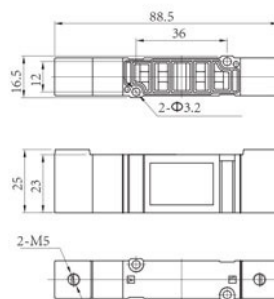
● FYAM-D-01



● FYAM-C-M5



● FYAM-C-01



● FYAM-C-02

