

3 Positions/4 Ports Manually-turn Valve



● TG34-S-08



● TG34-S-10



● TG34-S-15



● TG34-S-10H/TG34-S-15H

● Ordering Code

TG

TG Series

34

Function

24 : 2 Positions/4 Ports  
34 : 3 Positions/4 Ports

S

Control Form  
S : Turning

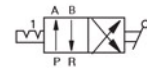
06

Pipe size  
06 : G1/8  
08 : G1/4  
10 : G3/8  
15 : G1/2

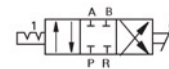
E

No Mark  
Closed Center  
E : Release Center  
H : Typical handle

■ Graphics Sign



2 Positions/4 Ports



Closed Center



Release Center

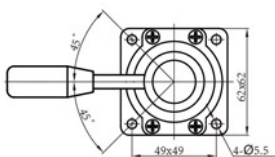
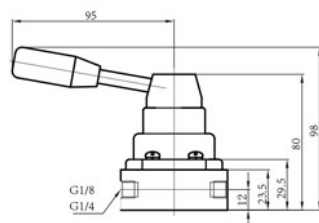
■ Technical Parameter

| Specification | Item       | Function            | Pipe size | Nominal Diameter (mm) | Applicable Medium | Applicable Pressure Range | Control Method   | Lubrication | Medium Temperature |
|---------------|------------|---------------------|-----------|-----------------------|-------------------|---------------------------|------------------|-------------|--------------------|
| TG24-S-06     |            | 2 Positions/4 Ports | G1/8      | 6                     | Air               | 0 ~ 1.0MPa                | Manually Control | Needless    | -5 ~ 60°C          |
| TG24-S-08     |            |                     | G1/4      | 8                     |                   |                           |                  |             |                    |
| TG24-S-10     |            |                     | G3/8      | 10                    |                   |                           |                  |             |                    |
| TG24-S-15     |            |                     | G1/2      | 15                    |                   |                           |                  |             |                    |
| TG34-S-06     | TG34-S-06E | 3 Positions/4 Ports | G1/8      | 6                     |                   |                           |                  |             |                    |
| TG34-S-08     | TG34-S-08E |                     | G1/4      | 8                     |                   |                           |                  |             |                    |
| TG34-S-10     | TG34-S-10E |                     | G3/8      | 10                    |                   |                           |                  |             |                    |
| TG34-S-15     | TG34-S-15E |                     | G1/2      | 15                    |                   |                           |                  |             |                    |
| TG34-S-10H    |            |                     | G3/8      | 10                    |                   |                           |                  |             |                    |
| TG34-S-15H    |            |                     | G1/2      | 15                    |                   |                           |                  |             |                    |

■ Figure Dimension

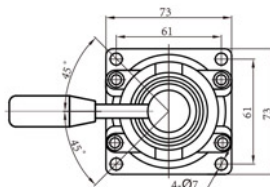
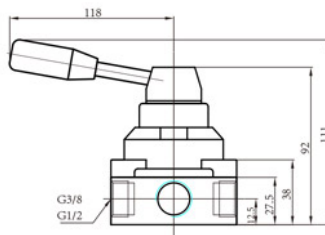
● TG24-S-06, TG24-S-08

● TG34-S-06, TG34-S-08



● TG24-S-10, TG24-S-15

● TG34-S-10, TG34-S-15



● TG34-S-10H, TG34-S-15H

