

FG Series Solenoid Valve



● **Character**
 It has the characteristics of low-consumption power and central exhaust of guiding valve and main valve, with small dimension, large flow, handsome shape, and quick action. It can be installed in integration, with good resistance to abrasion and long service life.

● **Ordering Code**

FG	25	2	1	08	C	L	AC220V
Series	Function 25 : 2 Positions/5Ports	Connection Code 1 : 1/8 2 : 1/4 3 : 3/8 4 : 1/2 6 : 3/4 8 : 1	Control Form 1 : Single Solenoid Operated 2 : Double Solenoid Operated	Pipe size 06 : G1/8 08 : G1/4 10 : G3/8 15 : G1/2 20 : G3/4 25 : G1	Working Mode: No Mark : 2 Positions C : 3 Positions Closed Center	Plug Mode No Mark : Lead Wire L : DIN Terminal with Light	Standard Voltage DC24V AC110V AC220V

■ **Solenoid specifications**

Allowable Voltage Range	±10%	
Insulated Grade	Class B or Equivalent	
Response Time	0.05 Sec	
Power Consumption	AC	Start : 5.6VA, Keep on : 5.4VA
	DC	4W
Surge Voltage Suppressor	AC: Varistor, DC: Diode	
Indicator Light	Neon Light, LED	

● **Maintenance Notice**

1. Be sure to check up the valve before installation.
2. Before installation, please confirm the voltage connection and direction of the air flow are right.
3. Notice to be dustproof. It's best to install a silencer or speed control silencer in front of solenoid valve.
4. Metal grain, dust and oil stain in pipes and fittings must be washed neatly before connected.

■ **Technical Parameter**

Specification	Item	Function	Pipe Size	Nominal Diameter (mm)	Applicable Medium	Applicable Pressure Range	Operating Method	Max Action Frequency	Lubrication	Medium Temperature
FG2511-06L	2 Positions/5Ports		G1/8	6	Air	0.15 ~ 0.9 MPa	Internally Piloted	5 Cycles/Sec	Needless	-5 ~ 60°C
FG2512-06L			G1/8	6						
FG2521-08L			G1/4	8						
FG2522-08L			G1/4	8						
FG2531-10L			G3/8	10						
FG2532-10L			G3/8	10						
FG2541-15L			G1/2	15						
FG2542-15L			G1/2	15						
FG2561-20L			G3/4	20						
FG2562-20L			G3/4	20						
FG2581-25L			G1	25						
FG2582-25L			G1	25						
FG3512-06CL	3 Positions/5Ports		G1/8	6		0.2 ~ 0.9 MPa		3 Cycles/Sec		
FG3522-08CL			G1/4	8						
FG3532-10CL			G3/8	10						
FG3542-15CL			G1/2	15						
FG3562-20CL			G3/4	20						
FG3582-25CL			G1	25						

FG Series Solenoid Valve

2 Positions/5 Ports Solenoid Valve

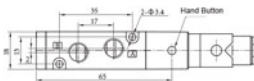
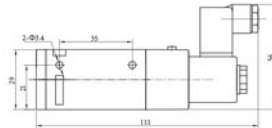
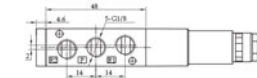


● FG2511-06L

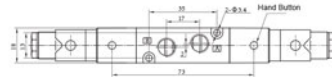
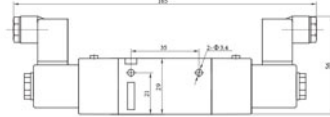
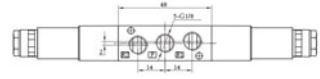


● FG2512-06L

● FG2511-06L



● FG2512-06L



2 Positions/5 Ports Solenoid Valve

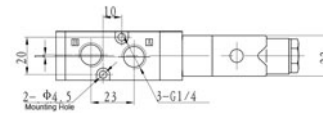
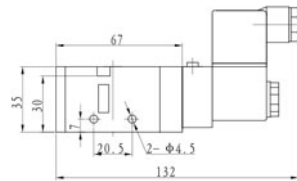
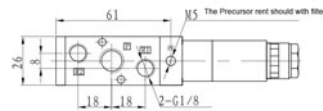


● FG2521-08L

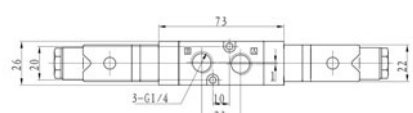
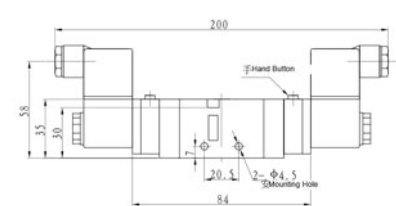
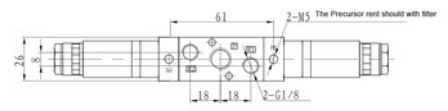


● FG2522-08L

● FG2521-08L



● FG2522-08L



2 Positions/5 Ports Solenoid Valve

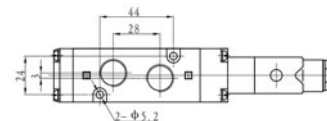
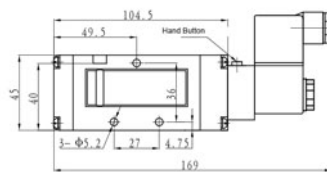
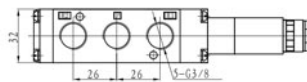


● FG2531-10L

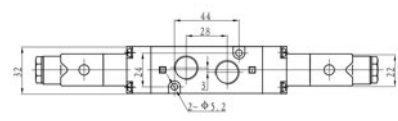
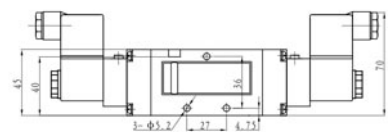
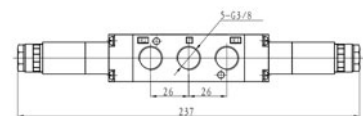


● FG2532-10L

● FG2531-10L



● FG2532-10L



FG Series Solenoid Valve

2 Positions/5 Ports Solenoid Valve

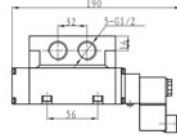
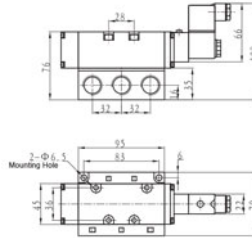


● FG2541-15L

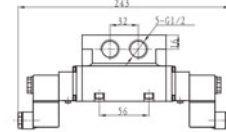
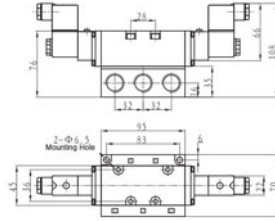


● FG2542-15L

● FG2541-15L



● FG2542-15L



2 Positions/5 Ports Solenoid Valve

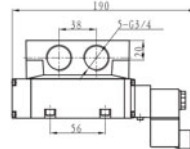
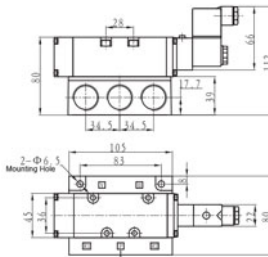


● FG2561-20L

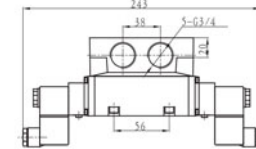
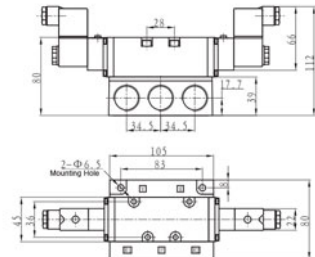


● FG2562-20L

● FG2561-20L



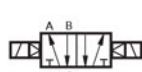
● FG2562-20L



2 Positions/5 Ports Solenoid Valve

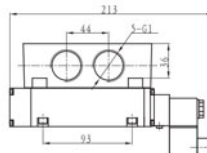
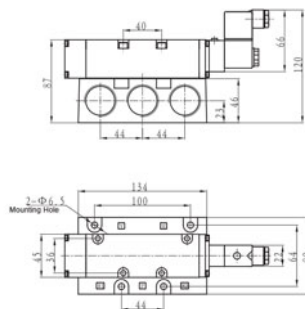


● FG2581-25L

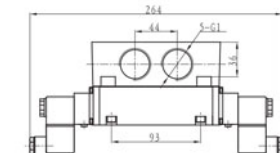
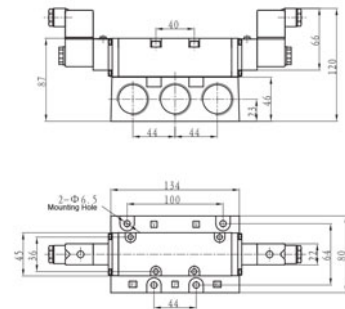


● FG2582-25L

● FG2581-25L



● FG2582-25L



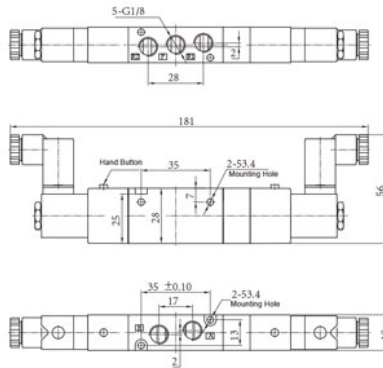
FG Series Solenoid Valve

3 Positions/5 Ports Solenoid Valve

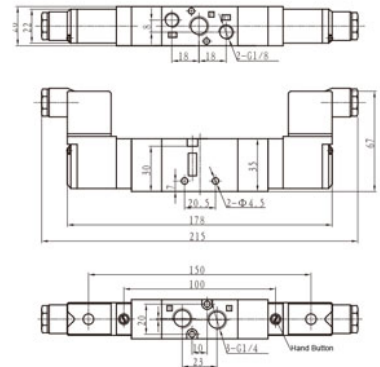


● FG3512-06CL ● FG3522-08CL

● FG3512-06CL



● FG3522-08CL

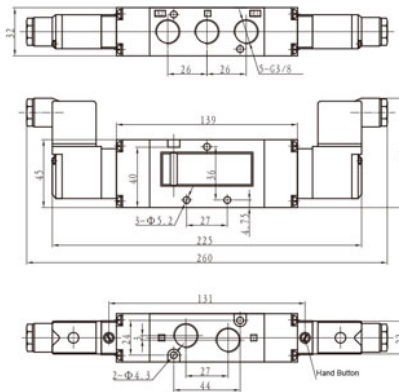


3 Positions/5 Ports Solenoid Valve

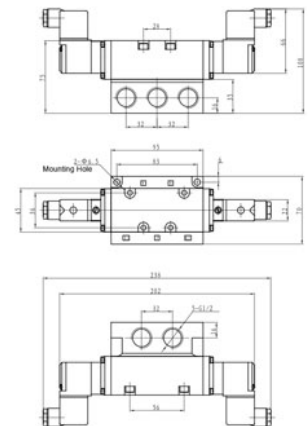


● FG3532-10CL ● FG3542-15CL

● FG3532-10CL



● FG3542-15CL

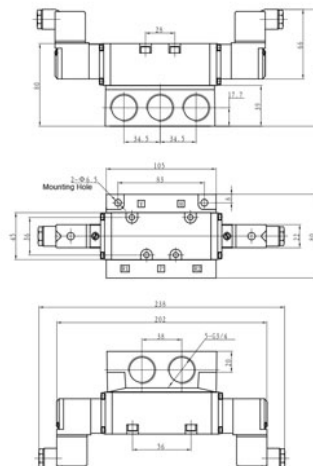


3 Positions/5 Ports Solenoid Valve



● FG3562-20CL ● FG3582-25CL

● FG3562-20CL



● FG3582-25CL

