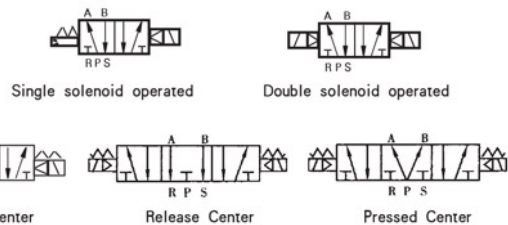


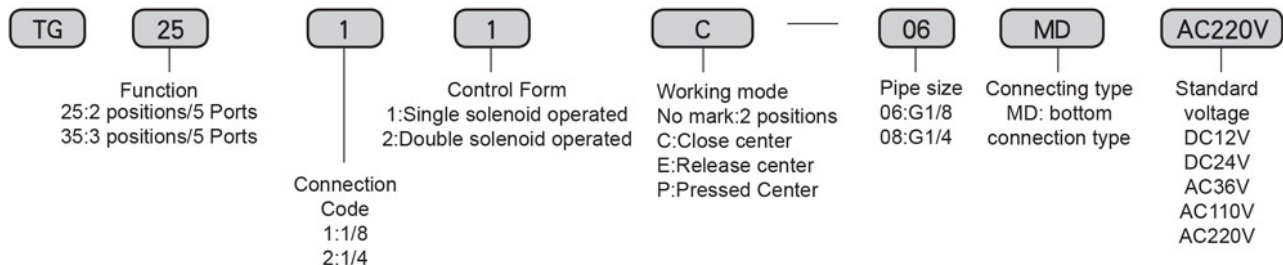
## TG series bottom connected combined valve

### • Character

Valve body is Bottom connected structure, air inlet and air outlet are on the same plane, you can connect directly without pipe joint and other accessories. Multi-valves in series are valve terminal. Valve body is fabricated by pressure casting; inner bore is adopting special processing technology, small frictional drag, and high flow capacity.



### • Ordering Code



### ■ Solenoid specifications

Allowable Voltage Range		± 10%
Insulated Grade		Class B or Equivalent
Response Time		0.05 Sec
Power Consumption	AC	Start : 5.6VA, Keep on : 5.4VA
	DC	4W
Surge Voltage Suppressor		AC:Varistor, DC:Diode
Indicator Light		Neon Light, LED

### • Maintenance Notice:

1. Be sure to check up the valve before installation.
2. Before installation, please confirm the voltage connection and airflow direction are right.
3. Notice to do dustproof. It's best to install a silencer or speed control silencer in the port of solenoid valve.
4. Metallic particle, dust and oil stain in pipes and fittings must be Eliminated before connected.

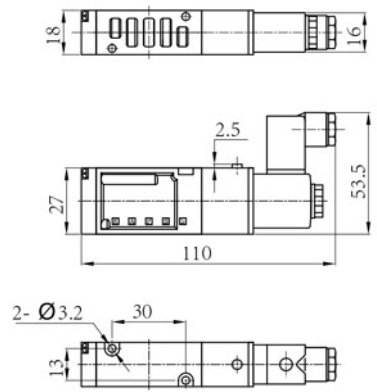
### ■ Technical Parameter

Specification	Item	Function	Pipe Size	Nominal Diameter (mm)	Applicable Medium	Applicable Pressure Range	Operating Method	Max Action Frequency	Lubrication	Medium Temperature	Power
TG2511-06MD	2 Positions/5Ports		G1/8	4	Air	0.15 ~ 0.8 MPa	Internally Piloted	5 Cycles/Sec	Needless	-5 ~ 60°C	AC220V;4VA DC24V;2.6W
TG2512-06MD			G1/8	4							
TG2521-08MD			G1/4	4.5							
TG2522-08MD			G1/4	4.5							
TG3512C.E.P-06MD	3 Positions/5Ports		G1/8	3.5	Air	0.2 ~ 0.8 MPa	Internally Piloted	3 Cycles/Sec	Needless	-5 ~ 60°C	AC220V;4VA DC24V;2.6W
TG3522C.E.P-08MD			G1/4	4							

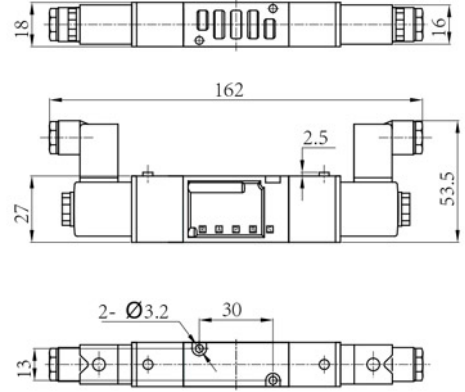
TG series bottom connected combined valve

Figure Dimension

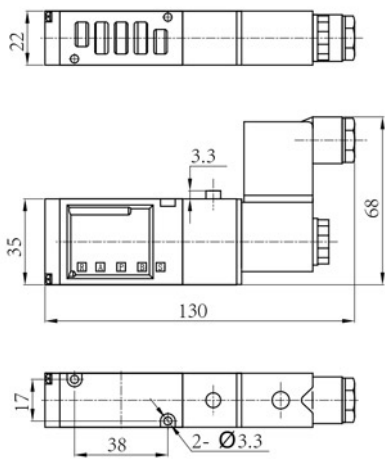
● TG2511-06MD



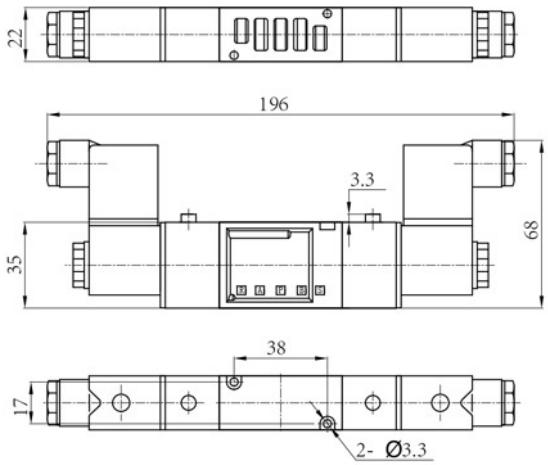
● TG2512-06MD



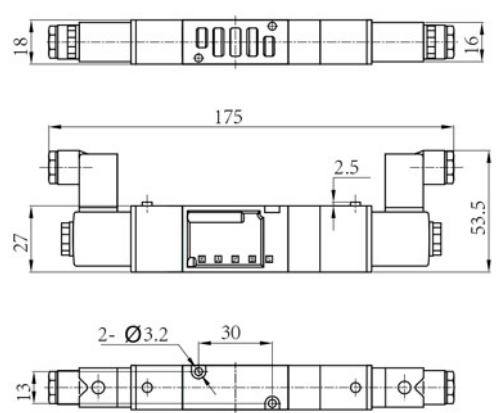
● TG2521-08MD



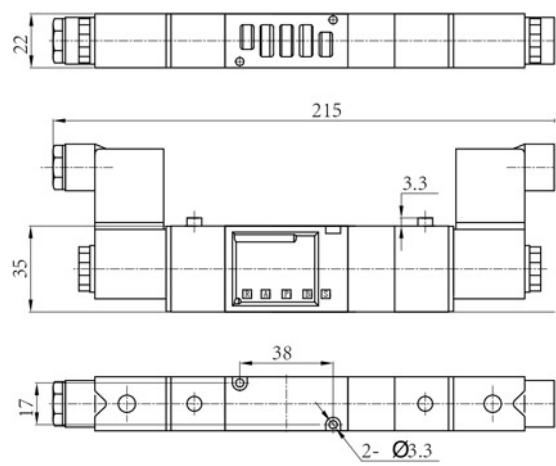
● TG2522-08MD



● TG3512C.E.P-06MD

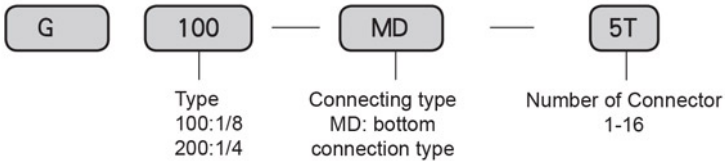


● TG3522C.E.P-08MD

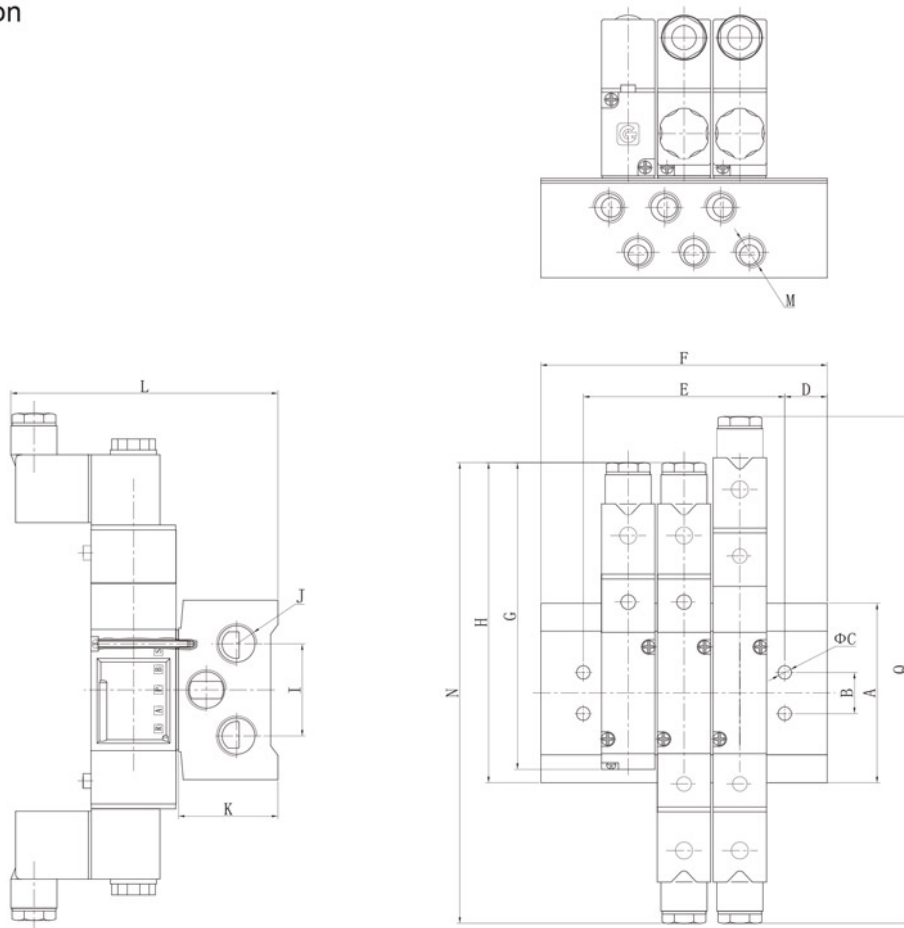


TG series bottom connected combined valve

● Ordering Code (Manifold)



■ Figure Dimension



Type	A	B	C	D	E	F	G	H	I	J	K	L	M	N	Q
GMD100	65	14	4.5	15	11+N x 19	41+N x 19	110	114.5	32	G1/4	33	89	G1/8	162	175
GMD200	74	17	5.5	17.5	14+N x 23	49+N x 23	130	135.5	38	G3/8	41	110	G1/4	196	215

N :Number of Connector