

UZ Series Solenoid Valve



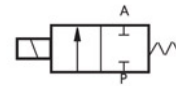
● UZ-A-06



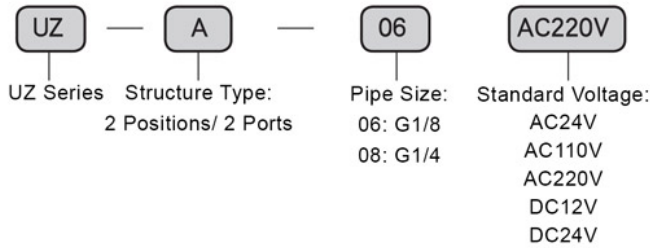
● UZ-A-08

■ Graphic Sign

● UZ-A-06, 08



● Ordering Code



■ Specific Property:

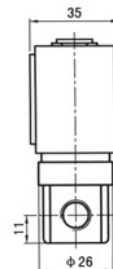
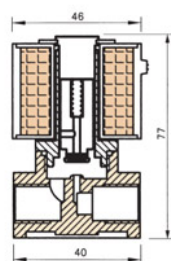
This valve has direct action type piston and quick action, with multiple purposes, high efficiency, long service life, good waterproof performance, multiple wiring directions and handsome shape.

■ Technical Parameter

Item \ Specification	UZ-A-06			UZ-A-08					
Material of Body	Brass								
Operating Method	Direct Action Type								
Pipe Size	G1/8			G1/4					
Nominal Diameter (mm)	2.5			2.5					
Applicable Fluid	Air, Water, Oil (below 50CST)								
Pressure Range	0 ~ 1.0MPa								
Applicable Temperature	Normal Type : -5 ~ 99°C								
Specified Voltage	AC12V	AC24V	AC36V	AC110V	AC220V	AC380V	DC12V	DC24V	DC110V
Power	7.5W	7.5 W	8 W	7.5 W	7.5 W	8 W	10 W	10 W	10W
Operating Voltage Range	±15%								
Min. Activating Time	0.05S								

■ Figure Dimension

● UZ-A-06, 08



UZ Series Solenoid Valve



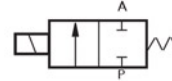
● UZ-B-06, 08, 10



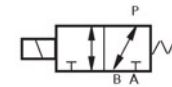
● UZ-C-06, 08, 10

Graphic Sign

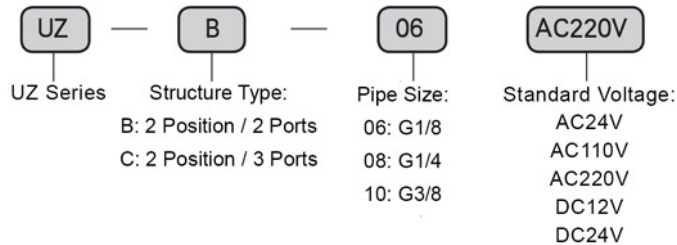
- UZ-B-06, 08, 10



- UZ-C-06, 08, 10



Ordering Code



Specific Property:

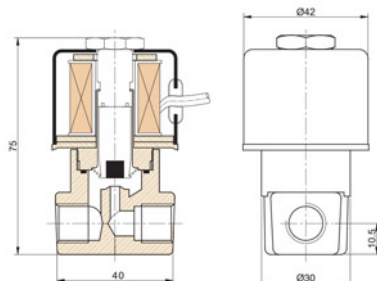
This valve has direct action type piston and quick action, with multiple purposes, high efficiency, long service life, good waterproof performance, multiple wiring directions and handsome shape.

Technical Parameter

Item \ Specification	UZ-B-06/UZ-C-06			UZ-B-08/UZ-C-08			UZ-B-10/UZ-C-10		
Material of Body	Brass								
Operating Method	Direct Action Type								
Pipe Size	G1/8			G1/4			G3/8		
Nominal Diameter (mm)	2.5			2.5			2.5		
Applicable Fluid	Air, Water, Oil (below 50CST)								
Pressure Range	0 ~ 1.0MPa								
Applicable Temperature	Normal Type : -5 ~ 99°C								
Specified Voltage	AC12V	AC24V	AC36V	AC110V	AC220V	AC380V	DC12V	DC24V	DC110V
Power	8W	8 W	8 W	11 W	9 W	9W	11 W	11 W	11 W
Operating Voltage Range	± 15%								
Min. Activating Time	0.05S								

Figure Dimension

● UZ-B-06, 08, 10



● UZ-C-06, 08, 10

